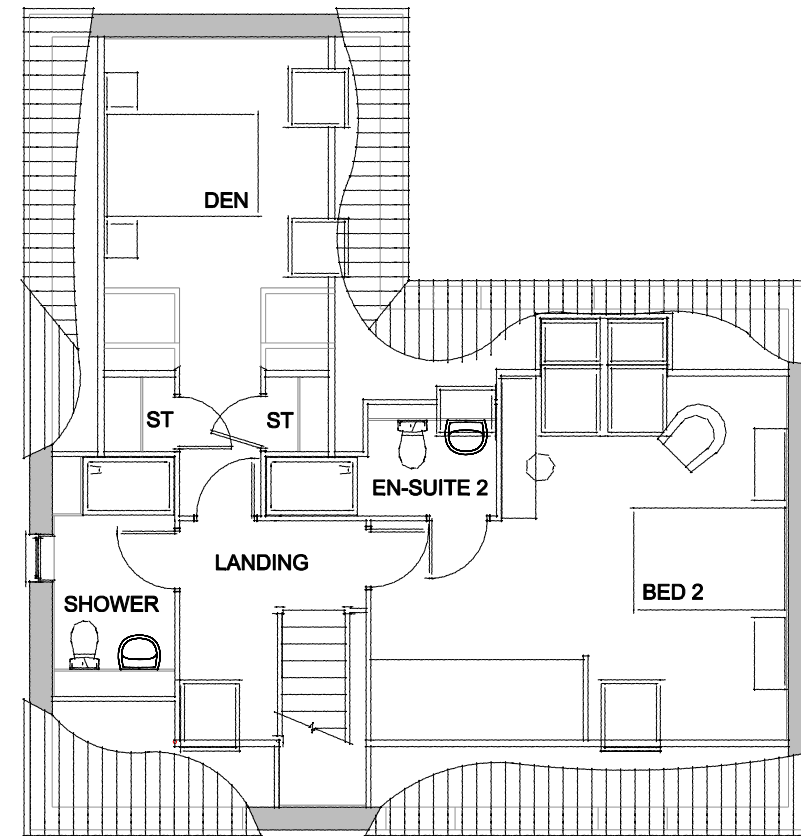




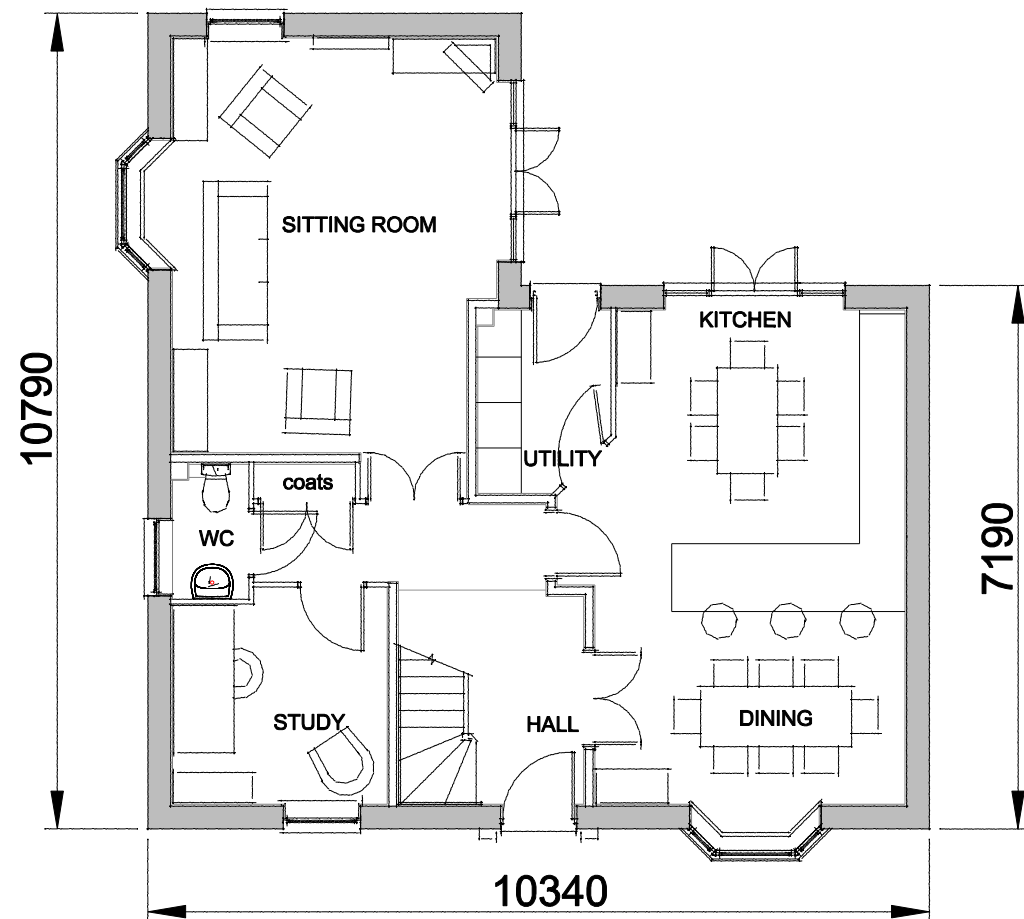
Hammonds Yates

Hammonds Yates Limited

3 Harbour Crescent Serbert Way
 Portishead Bristol BS20 7FT
 Tel: 01275 844744 Fax: 01275 845575
 E Mail: info@hammondsyates.com

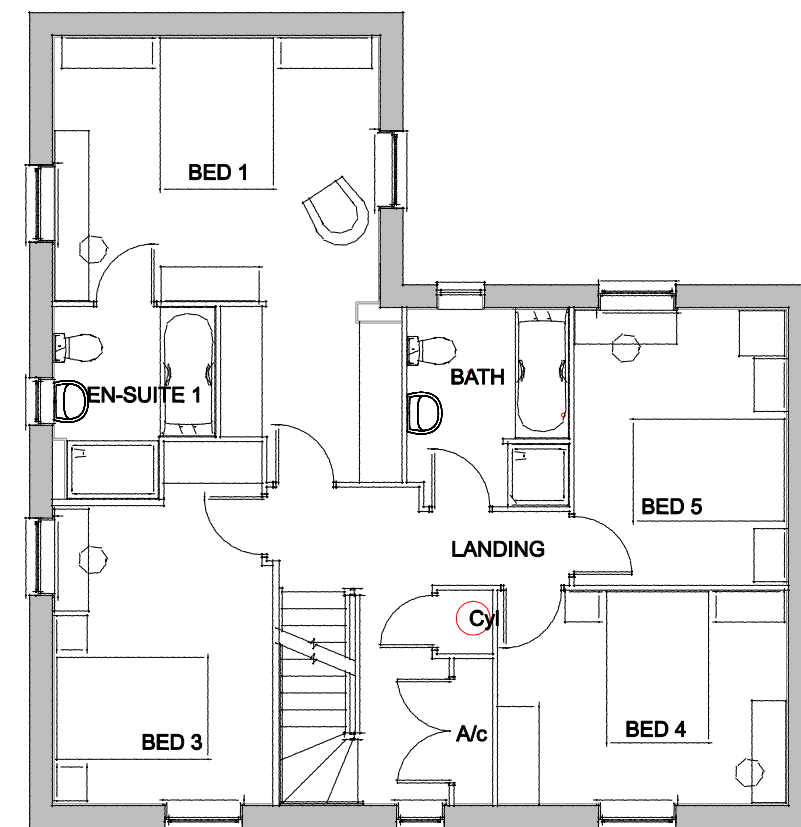


First Floor Plan



Ground Floor Plan

Floor Area - 205.9 sqm 2217 sqft



First Floor Plan

ILLUSTRATIVE FOR PLANNING PURPOSES ONLY

Rev.
 Client
**DAVID WILSON
 HOMES**

Drawn By Scales Date
 DA 1:100@A3 Jan 2011
 Job No. Drawing No. Rev.
1291A 160

Architectural Town Planning
 Urban Design
 Landscape Architecture
 Civil Engineering
 Planning Supervision